

# Antares Warewash Dispensing System

## Quick Start Guide Antares Series



Online and downloadable Product Manuals and Quick Start Guides are available at [www.HydroSystemsCo.com](http://www.HydroSystemsCo.com). Please check online for the latest version of this Quick Start Guide and Full Reference Manual.

## Mechanical Installation

### Wall Mounting

1. Choose an installation location that is:
  - Close to the product containers.
  - At a reasonable height for easy maintenance access and does not interfere with opening of doors.
  - Away from any direct sources of steam, water spray, and high temperatures.
  - Close enough to the dish machine electrical control panel to allow dispenser wiring without use of an external junction box (not provided) wherever possible. Wire harness is 11.5 feet.
2. Using mounting bracket as a template, mark holes to drill into mounting surface. For sheet metal mounting with screws and nuts, drill 1/4" (6 mm) holes. For wall anchors, drill holes as appropriate for anchors used.
3. Attach mounting bracket to mounting surface with hardware provided.
4. Hang unit on bracket.



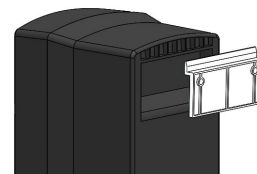
### **WARNING:**

The Antares dispensing system is intended to be installed by experienced installers in accordance with all applicable electrical and plumbing codes.

All dish machine and dispenser power must be disconnected during installation and/or any time the dispenser cabinet is opened.

### *Mounting Bracket*

*Back of Unit  
Hang unit from  
this lip on to  
Mounting  
Bracket*



*Figure 1-1 Mounting Bracket*

**NOTE:** Always use proper lockout tagout procedures when servicing the dispenser.

# Electrical Installation

## Probe Wiring (Probe Mode)

1. Route the probe wire to the probe location. If you need to extend the probe wire, use high quality corrosion resistant (waterproof is best) butt splices with a good quality crimping tool.
2. Strip wire ends and crimp on the ring terminals provided.
3. Connect the ring terminals to the probe with nuts and lock washers provided. Be sure that connections are tight and secure.
4. For optional rinse temperature probe installation, please refer to instructions provided in kit.
5. For optional tank temperature probe installation, please refer to instructions provided in kit.

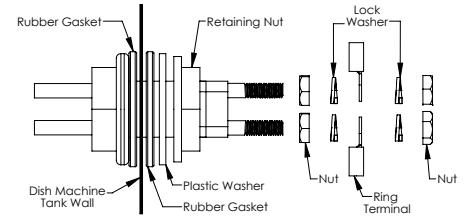


Figure 2-1 Probe Wiring Sequence

## Main Power Wiring

Connect the blue wire to one side of the voltage source. Connect the brown wire to the other line of the voltage source. See figure 2-2.

## Signal Wiring

The detergent and rinse signal inputs are optically isolated and accept voltage from 24-240VAC or 24VDC. See figures 2-3 and 2-4.

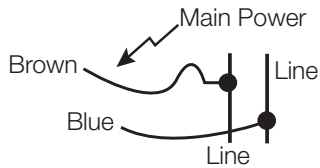


Figure 2-2 Main Power Connections

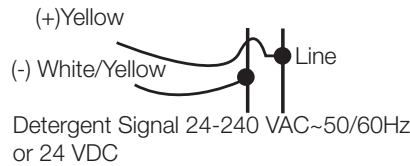


Figure 2-3 Detergent Signal Wiring Diagram—Probe or Probeless Mode

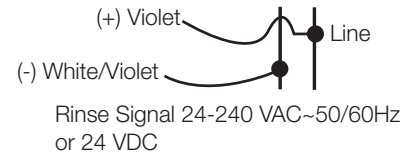


Figure 2-4 Rinse Signal Wiring Diagram

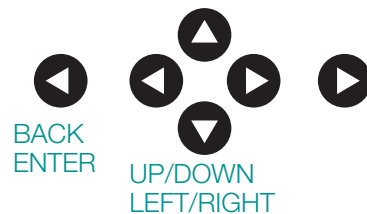
**NOTE:** If an external optional device will be used, you must supply your own wire.

# Programming Menus, Screens, and Setup

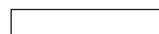
## Keypad, Menus, and Symbols

The keypad is designed for easy operation. Directional keys (Up, Down, Left, Right) let you navigate through menus. The Enter key allows you to enter commands and choices as well as start or stop actions, and the Back key takes you to your previous screen.

### Keypad Buttons



Selection Box



Edit Value Arrows



Scroll Arrows



Flashing Bars



# Programming Menus, Screens, and Setup

## Rinse Pump RPM Settings Guide

MLS DESIRED PER RACK

	1	1.5	2	2.5	3	3.5	4	4.5	5
FINAL RINSE TIME	6	20	30	40	50	60			
	8	15	23	30	38	45	53	60	
	10	12	18	24	30	36	42	48	54
	12	10	15	20	25	30	35	40	45
	14	9	13	17	21	26	30	34	39
	15	8	12	16	20	24	28	32	36
	16	8	11	15	19	23	26	30	34
	18	7	10	13	17	20	23	27	30
	18	7	10	13	17	20	23	27	30
	20	6	9	12	15	18	21	24	27

PUMP RMP SETTINGS

## Alarm Messages

### ALARM

DETERGENT OVERFEED  
STOP! – CHANGE THE  
PRODUCT CONTAINER  
BEFORE CLEARING

< CLEAR

Detergent Overfeed Stop Alarm

### ALARM

COND PROBE FAULTY! –  
DO YOU WISH TO SWITCH  
TO PROBELESS MODE

< YES NO >

Conductivity Probe Faulty Alarm

### ALARM

LOW RINSE  
TEMPERATURE

< CLEAR

Low Rinse Temperature Alarm

### ALARM

MACHINE CLEAN! –  
PERFORM A DE-LIME  
CYCLE ON THE WASHER

< CLEAR

Machine Clean Alarm

### ALARM

SQUEEZE TUBES NEED  
TO BE CHANGED!

< CLEAR

Squeeze Tube Change Alarm

### ALARM

PUMP 1 JAM  
CHECK DISPENSER

< CLEAR

Pump Jam Alarm

### ALARM

COND PROBE FAULTY! –  
CHECK DET PROBE FOR  
DAMAGE OR FOULING

< CLEAR

Conductivity Probe Faulty Alarm

### ALARM

CHANGE TANK!  
RACKS RUN  
SINCE LAST INITIAL FILL  
HAS BEEN EXCEEDED

< CLEAR

Change Tank Alarm

### ALARM

CONDUCTIVITY PROBE  
NOT CALIBRATED

< CLEAR

Probe Not Calibrated Alarm

# User Menu/ Program Menu

Home Screen

**NOVA CONTROLS**  
 Racks: 00000 PROBE  
 Cond: 000 WTemp:000  
 Setpt: 000 RTemp:000  
 Sigm: 1  
 Pump: 0 RIN SAN  
 Alarm: DET \*\* LOW/DET

**1.0 USER MENU**  
 USER PRIME PUMPS  
 DE-LIME CYCLE  
 MAX DETERGENT TIME  
 MANUAL INITIAL CHRQ  
 1.1  
**1.1.1 SET PRIME PUMP**  
 [P1] DETERGENT  
 P2 RINSE  
 P3 SANITIZER  
 1.2  
**1.1.1.1 START DE-LIME**  
 THIS WILL STOP  
 ALL OPERATION  
 CONTINUE?  
 <EXIT> START/STOP>  
 1.3  
**1.1.1.2 MAX DET TIME**  
 05:00 MM:SS  
 <EXIT> RESET>  
 1.4  
**1.1.1.3 MANUAL CHARGE**  
 DO YOU WISH  
 TO START MANUAL  
 INITIAL CHARGE?  
 <BACK> ENTER>

**1.1.1.4 PRIME**  
 P1 DETERGENT  
 <EXIT> START/STOP>  
 1.2.1  
**1.1.1.5 DE-LIME CYCLE**  
 TIME REMAINING:  
 09:59  
 <EXIT>

**1.1.1.6 MANUAL CHARGE**  
 TIME REMAINING:  
 199 SEC  
 <EXIT>

**1.1.1.7 SET PRIME PUMP**  
 DISABLED  
 <EXIT>

**1.1.1.8 PROGRAM MENU**  
 MANAGER REPORTS  
 INSTALLER MENU

**1.1.1.9 MGR PASSWORD**  
 <0123>

**1.1.1.10 INSTL PASSWORD**  
 <01234>

**1.1.1.11 REPORT DATE**  
 FROM: <2012-01-01>

**1.1.1.12 REPORT DATE**  
 TO: <2012-05-28>

**1.1.1.13 REPORT NAME**  
 <REPORT>

**1.1.1.14 INSTALLER MENU**  
 CONFIG SETTINGS  
 PROGRAM SETTINGS  
 ALARM SETTINGS  
 INSTALLER SERVICE  
 INITIAL SYSTEM SETUP  
 DATA TRANSFER

**1.1.1.15 CONFIG SET-**  
 TINGS  
 DETERGENT CNTRL  
 MACHINE TYPE  
 DETERGENT TYPE  
 ALARM OPTION  
 UNITS OF MEASURE  
 <AUTO SWITCH MODE>  
 DISP LIVE COND  
 DISP RINSE TEMP  
 USER PRIME PUMPS  
 INITIAL CHARGE  
 <CONV RACK TIME>

**1.1.1.16 DETERGENT CNTRL**  
 PROBE  
 PROBELESS  
 <BACK> ENTER>

**1.1.1.17 UNITS - MEASURE**  
 SAE/IMPERIAL (LB/OZ)  
 METRIC (KG/ML)  
 <BACK> ENTER>

**1.1.1.18 DISP RINSE TEMP**  
 ENABLE  
 DISABLE  
 <BACK> ENTER>

**1.1.1.19 MACHINE TYPE**  
 DOOR  
 CONVEYOR  
 ALTERNATE DOOR  
 <BACK> ENTER>

**1.1.1.20 AUTO SWITCH MODE**  
 ENABLE  
 DISABLE  
 <BACK> ENTER>

**1.1.1.21 USER PRIME**  
 DISABLE  
 ENABLE  
 LIMITED 30 SEC  
 <BACK> ENTER>

**1.1.1.22 DETERGENT TYPE**  
 LIQUID  
 CAPSULE  
 <BACK> ENTER>

**1.1.1.23 CONVEYOR TIME**  
 <00 SEC>

**1.1.1.24 INITIAL CHARGE**  
 [AUTOMATIC]  
 MANUAL  
 <BACK> ENTER>

**1.1.1.25 ALARM OPTION**  
 OFF  
 INTERNAL  
 EXTERNAL  
 BOTH  
 <BACK> ENTER>

**1.1.1.26 DISP LIVE COND**  
 ENABLE  
 DISABLE  
 <BACK> ENTER>

**1.1.1.27 PULSE FEED**  
 OFF - NO PULSE FEED  
 1-ON 9-OFF 50% SPT  
 1-ON 9-OFF 70% SPT  
 2-ON 6-OFF 50%-SPT  
 2-ON 6-OFF 90%-SPT (DEFAULT)  
 <BACK> ENTER>

**1.1.1.28 3<sup>RD</sup> PRODUCT RUN**  
 [RINSE]  
 DETERGENT  
 <BACK> ENTER>

**1.1.1.29 4-ON 4-OFF 70% SPT**  
 16-ON 4-OFF 80% SPT

2.0  
 ACCESSED BY PRESSING  
 BACK KEY

**2.1**

**2.1.1**

**2.1.1.1**

**2.1.1.2**

**2.1.1.3**

**2.1.1.4**

**2.1.1.5**

**2.1.1.6**

**2.1.1.7**

**2.1.1.8**

**2.1.1.9**

**2.1.1.10**

**2.1.1.11**

**2.1.1.12**

**2.1.1.13**

**2.1.1.14**

**2.1.1.15**

**2.1.1.16**

**2.1.1.17**

**2.1.1.18**

**2.1.1.19**

**2.1.1.20**

**2.1.1.21**

**2.1.1.22**

**2.1.1.23**

**2.1.1.24**

**2.1.1.25**

**2.1.1.26**

**2.1.1.27**

**2.1.1.28**

**2.1.1.29**

**2.1.1.30**

**2.1.1.31**

**2.1.1.32**

**2.1.1.33**

**2.1.1.34**

**2.1.1.35**

**2.1.1.36**

**2.1.1.37**

**2.1.1.38**

**2.1.1.39**

**2.1.1.40**

**2.1.1.41**

**2.1.1.42**

**2.1.1.43**

**2.1.1.44**

**2.1.1.45**

**2.1.1.46**

**2.1.1.47**

**2.1.1.48**

**2.1.1.49**

**2.1.1.50**

**2.1.1.51**

**2.1.1.52**

**2.1.1.53**

**2.1.1.54**

**2.1.1.55**

**2.1.1.56**

**2.1.1.57**

**2.1.1.58**

**2.1.1.59**

**2.1.1.60**

**2.1.1.61**

**2.1.1.62**

**2.1.1.63**

**2.1.1.64**

**2.1.1.65**

**2.1.1.66**

**2.1.1.67**

**2.1.1.68**

**2.1.1.69**

**2.1.1.70**

**2.1.1.71**

**2.1.1.72**

**2.1.1.73**

**2.1.1.74**

**2.1.1.75**

**2.1.1.76**

**2.1.1.77**

**2.1.1.78**

**2.1.1.79**

**2.1.1.80**

**2.1.1.81**

**2.1.1.82**

**2.1.1.83**

**2.1.1.84**

**2.1.1.85**

**2.1.1.86**

**2.1.1.87**

**2.1.1.88**

**2.1.1.89**

**2.1.1.90**

**2.1.1.91**

**2.1.1.92**

**2.1.1.93**

**2.1.1.94**

**2.1.1.95**

**2.1.1.96**

**2.1.1.97**

**2.1.1.98**

**2.1.1.99**

**2.1.1.100**

**2.1.1.101**

**2.1.1.102**

**2.1.1.103**

**2.1.1.104**

**2.1.1.105**

**2.1.1.106**

**2.1.1.107**

**2.1.1.108**

**2.1.1.109**

**2.1.1.110**

**2.1.1.111**

**2.1.1.112**

**2.1.1.113**

**2.1.1.114**

**2.1.1.115**

**2.1.1.116**

**2.1.1.117**

**2.1.1.118**

**2.1.1.119**

**2.1.1.120**

**2.1.1.121**

**2.1.1.122**

**2.1.1.123**

**2.1.1.124**

**2.1.1.125**

**2.1.1.126**

**2.1.1.127**

**2.1.1.128**

**2.1.1.129**

**2.1.1.130**

**2.1.1.131**

**2.1.1.132**

**2.1.1.133**

**2.1.1.134**

**2.1.1.135**

**2.1.1.136**

**2.1.1.137**

**2.1.1.138**

**2.1.1.139**

**2.1.1.140**

**2.1.1.141**

**2.1.1.142**

**2.1.1.143**

**2.1.1.144**

**2.1.1.145**

**2.1.1.146**

**2.1.1.147**

**2.1.1.148**

**2.1.1.149**

**2.1.1.150**

**2.1.1.151**

**2.1.1.152**

**2.1.1.153**

**2.1.1.154**

**2.1.1.155**

**2.1.1.156**

**2.1.1.157**

**2.1.1.158**

**2.1.1.159**

**2.1.1.160**

**2.1.1.161**

**2.1.1.162**

**2.1.1.163**

**2.1.1.164**

**2.1.1.165**

**2.1.1.166**

**2.1.1.167**

**2.1.1.168**

**2.1.1.169**

**2.1.1.170**

**2.1.1.171**

**2.1.1.172**

**2.1.1.173**

**2.1.1.174**

**2.1.1.175**

**2.1.1.176**

**2.1.1.177**

**2.1.1.178**

**2.1.1.179**

**2.1.1.180**

**2.1.1.181**

**2.1.1.182**

**2.1.1.183**

**2.1.1.184**

**2.1.1.185**

**2.1.1.186**

**2.1.1.187**

**2.1.1.188**

**2.1.1.189**

**2.1.1.190**

**2.1.1.191**

**2.1.1.192**

**2.1.1.193**

**2.1.1.194**

**2.1.1.195**

**2.1.1.196**

**2.1.1.197**

**2.1.1.198**

**2.1.1.199**

**2.1.1.200**

**2.1.1.201**

**2.1.1.202**

**2.1.1.203**

**2.1.1.204**

**2.1.1.205**

**2.1.1.206**

**2.1.1.207**

**2.1.1.208**

**2.1.1.209**

**2.1.1.210**

**2.1.1.211**

**2.1.1.212**

**2.1.1.213**

**2.1.1.214**

**2.1.1.215**

**2.1.1.216**

**2.1.1.217**

**2.1.1.218**

**2.1.1.219**

**2.1.1.220**

**2.1.1.221**

**2.1.1.222**

**2.1.1.223**

**2.1.1.224**

**2.1.1.225**

**2.1.1.226**

**2.1.1.227**

**2.1.1.228**

**2.1.1.229**

**2.1.1.230**

**2.1.1.231**

**2.1.1.232**

**2.1.1.233**

**2.1.1.234**

**2.1.1.235**

**2.1.1.236**

**2.1.1.237**

**2.1.1.238**

**2.1.1.239**

**2.1.1.240**

**2.1.1.241**

**2.1.1.242**

**2.1.1.243**

**2.1.1.244**

**2.1.1.245**

**2.1.1.246**

**2.1.1.247**

**2.1.1.248**

**2.1.1.249**

**2.1.1.250**

**2.1.1.251**

**2.1.1.252**

**2.1.1.253**

**2.1.1.254**

**2.1.1.255**

**2.1.1.256**

**2.1.1.257**

**2.1.1.258**

**2.1.1.259**

**2.1.1.260**

**2.1.1.261**

**2.1.1.262**

**2.1.1.263**

**2.1.1.264**

**2.1.1.265**

**2.1.1.266**

**2.1.1.267**

**2.1.1.268**

**2.1.1.269**

**2.1.1.270**

**2.1.1.271**

**2.1.1.272**

**2.1.1.273**

**2.1.1.274**

**2.1.1.275**

**2.1.1.276**

**2.1.1.277**

**2.1.1.278**

**2.1.1.279**

**2.1.1.280**

**2.1.1.281**

**2.1.1.282**

**2.1.1.283**

**2.1.1.284**

**2.1.1.285**

**2.1.1.286**

**2.1.1.287**

**2.1.1.288**

**2.1.1.289**

**2.1.1.290**

**2.1.1.291**

**2.1.1.292**

**2.1.1.293**

**2.1.1.294**

**2.1.1.295**

**2.1.1.296**

**2.1.1.297**

**2.1.1.298**

**2.1.1.299**

**2.1.1.300**

**2.1.1.301**

**2.1.1.302**

**2.1.1.303**

**2.1.1.304**

**2.1.1.305**

**2.1.1.306**

**2.1.1.307**

**2.1.1.308**

**2.1.1.309**

**2.1.1.310**

**2.1.1.311**

**2.1.1.312**

**2.1.1.313**

**2.1.1.314**

**2.1.1.315**

**2.1.1.316**

**2.1.1.317**

**2.1.1.318**

**2.1.1.319**

**2.1.1.320**

**2.1.1.321**

**2.1.1.322**

**2.1.1.323**

**2.1.1.324**

**2.1.1.325**

**2.1.1.326**

**2.1.1.327**

**2.1.1.328**

**2.1.1.329**

**2.1.1.330**

**2.1.1.331**

**2.1.1.332**

**2.1.1.333**

**2.1.1.334**

**2.1.1.335**

**2.1.1.336**

**2.1.1.337**

**2.1.1.338**

**2.1.1.339**

**2.1.1.340**

**2.1.1.341**

**2.1.1.342**

**2.1.1.343**

**2.1.1.344**

**2.1.1.345**

**2.1.1.346**

**2.1.1.347**

**2.1.1.348**

**2.1.1.349**

**2.1.1.350**

**2.1.1.351**

**2.1.1.352**

**2.1.1.353**

**2.1.1.354**

**2.1.1.355**

**2.1.1.356**

**2.1.1.357**

**2.1.1.358**

**2.1.1.359**

**2.1.1.360**

**2.1.1.361**

**2.1.1.362**

**2.1.1.363**

**2.1.1.364**

**2.1.1.365**

**2.1.1.366**

**2.1.1.367**

**2.1.1.368**

**2.1.1.369**

**2.1.1.370**

**2.1.1.371**

**2.1.1.372**

**2.1.1.373**

**2.1.1.374**

**2.1.1.375**

**2.1.1.376**

**2.1.1.377**

**2.1.1.378**

**2.1.1.379**

**2.1.1.380**

**2.1.1.381**

**2.1.1.382**

**2.1.1.383**

**2.1.1.384**

**2.1.1.385**

**2.1.1.386**

**2.1.1.387**

**2.1.1.388**

**2.1.1.389**

**2.1.1.390**

**2.1.1.391**

**2.1.1.392**

**2.1.1.393**

**2.1.1.394**

**2.1.1.395**

**2.1.1.396**

**2.1.1.397**

**2.1.1.398**

**2.1.1.399**

**2.1.1.400**

**2.1.1.401**

**2.1.1.402**

**2.1.1.403**

**2.1.1.404**

**2.1.1.405**

**2.1.1.406**

**2.1.1.407**

**2.1.1.408**

**2.1.1.409**

**2.1.1.410**

**2.1.1.411**

**2.1.1.412**

**2.1.1.413**

**2.1.1.414**

**2.1.1.415**

**2.1.1.416**

**2.1.1.417**

**2.1.1.418**

**2.1.1.419**

**2.1.1.420**

**2.1.1.421**

**2.1.1.422**

**2.1.1.423**

**2.1.1.424**

**2.1.1.425**

**2.1.1.426**

**2.1.1.427**

**2.1.1.428**

**2.1.1.429**

**2.1.1.430**

**2.1.1.431**

**2.1.1.432**

**2.1.1.433**

**2.1.1.434**

**2.1.1.435**

**2.1.1.436**

**2.1.1.437**

**2.1.1.438**

**2.1.1.439**

**2.1.1.440**

**2.1.1.441**

**2.1.1.442**

**2.1.1.443**

**2.1.1.444**

**2.1.1.445**

**2.1.1.446**

**2.1.1.447**

**2.1.1.448**

**2.1.1.449**

**2.1.1.450**

**2.1.1.451**

**2.1.1.452**

**2.1.1.453**

**2.1.1.454**

**2.1.1.455**

**2.1.1.456**

**2.1.1.457**

**2.1.1.458**

**2.1.1.459**

**2.1.1.460**

**2.1.1.461**

**2.1.1.462**

**2.1.1.463**

**2.1.1.464**

**2.1.1.465**

**2.1.1.466**

**2.1.1.467**

**2.1.1.468**

**2.1.1.469**

**2.1.1.470**

**2.1.1.471**

**2.1.1.472**

**2.1.1.473**

**2.1.1.474**

**2.1.1.475**

**2.1.1.476**

**2.1.1.477**

**2.1.1.478**

**2.1.1.479**

**2.1.1.480**

**2.1.1.481**

**2.1.1.482**

**2.1.1.483**

**2.1.1.484**

**2.1.1.485**

**2.1.1.486**

**2.1.1.487**

**2.1.1.488**

**2.1.1.489**

**2.1.1.490**

**2.1.1.491**

**2.1.1.492**

**2.1.1.493**

**2.1.1.494**

**2.1.1.495**

**2.1.1.496**

**2.1.1.497**

**2.1.1.498**

**2.1.1.499**

**2.1.1.500**

**2.1.1.501**

**2.1.1.502**

**2.1.1.503**

**2.1.1.504**

**2.1.1.505**

**2.1.1.506**

**2.1.1.507**

**2.1.1.508**

**2.1.1.509**

**2.1.1.510**

**2.1.1.511**

**2.1.1.512**

**2.1.1.513**

**2.1.1.514**

**2.1.1.515**

**2.1.1.516**

**2.1.1.517**

**2.1.1.518**

**2.1.1.519**

**2.1.1.520**

**2.1.1.521**

**2.1.1.522**

**2.1.1.523**

**2.1.1.524**

**2.1.1.525**

**2.1.1.526**

**2.1.1.527**

**2.1.1.528**

**2.1.1.529**

**2.1.1.530**

**2.1.1.531**

**2.1.1.532**

**2.1.1.533**

**2.1.1.534**

**2.1.1.535**

**2.1.1.536**

**2.1.1.537**

**2.1.1.538**

**2.1.1.539**

**2.1.1.540**

**2.1.1.541**

**2.1.1.542**

**2.1.1.543**

**2.1.1.544**

**2.1.1.545**

**2.1.1.546**

**2.1.1.547**

**2.1.1.548**

**2.1.1.549**

**2.1.1.550**

**2.1.1.551**

**2.1.1.552**

**2.1.1.553**

**2.1.1.554**

**2.1.1.555**

**2.1**

# Program Menu/Program Settings

2.2.1.2.P (PROBE DETERGENT CONTROL)

**PROG SETTINGS**  
 DETERGENT SETPNT  
 DETERGENT SPEED  
 RINSE PUMP SPEED  
 RINSE FEED OPTION  
 RINSE DELAY TIME  
 3<sup>RD</sup> PROD SPEED

2.2.1.2.1

**DET SETPOINT**  
 MANUAL ADD PROD  
 ENTER SET POINT  
 USE TANK READING  
 TANK READING: 000  
 SET POINT: 000

2.2.1.2.2

**RINSE PUMP SPD**  
 20.5 RPM  
 TO TEST

2.2.1.2.3

**RINSE FEED OPT**  
 RINSE ON RINSE  
 RINSE ON DET  
 <BACK ENTER>

2.2.1.2.4

**RINSE DELAY TIME**  
 <000 SEC>

2.2.1.2.5

**3<sup>RD</sup> PRODUCT SPD**  
 110 RPM  
 TO TEST  
 <BACK ENTER>

2.2.1.2.1.1

**MANUAL ADD**  
 TANK READING: 000  
 #####

2.2.1.2.2.1

**RINSE PUMP SPD**  
 00.0 RPM  
 <BACK ENTER>

2.2.1.2.1.2

**ENTER SETPNT**  
 <000>  
 <BACK ENTER>

2.2.1.2.2.2

**TEST PUMP**  
 20.5 RPM  
 #####  
 <EXIT START/STOP>

2.2.1.2.PL (PROBELESS DETERGENT CONTROL)

**PROG SETTINGS**  
 DET INITIAL CHARGE  
 DETERGENT DOSE  
 DET DOSE INTRVAL  
 LOW DET THRSHLD  
 RINSE PUMP SPEED  
 RINSE FEED OPTION  
 RINSE DELAY TIME  
 3<sup>RD</sup> PROD PUMP SPEED  
 2.2.1.2.1 PL

2.2.1.2.1

**DET INIT CHARGE**  
 012 SEC  
 <BACK ENTER>

2.2.1.2.2 PL

**DET DOSE**  
 02 SEC  
 <BACK ENTER>

2.2.1.2.3 PL

**DET DOSE INTRVL**  
 1 RACKS  
 <BACK ENTER>

2.2.1.2.4 PL

**LOW DET THRSHLD**  
 00 RACKS  
 <BACK ENTER>

2.2.1.2.5 PL

**RINSE PUMP SPD**  
 20.5 RPM  
 TO TEST

2.2.1.2.5.1 PL

**RINSE PUMP SPD**  
 00.0 RPM  
 <BACK ENTER>

2.2.1.2.5.2 PL

**TEST PUMP**  
 20.5 RPM  
 #####  
 <EXIT START/STOP>

2.2.1.2.6 PL

**RINSE FEED OPT**  
 RINSE ON RINSE  
 RINSE ON DET  
 <BACK ENTER>

2.2.1.2.7 PL

**RINSE DELAY TIME**  
 <000 SEC>

2.2.1.2.8 PL

**3<sup>RD</sup> PRODUCT SPD**  
 110 RPM  
 TO TEST  
 <BACK ENTER>

2.2.1.2.8.1 PL

**3<sup>RD</sup> PRODUCT SPD**  
 00.0 RPM  
 <BACK ENTER>

2.2.1.2.8.2 PL

**TEST PUMP**  
 110 RPM  
 <EXIT START/STOP>

# Program Menu/ Alarm Settings

2.2.1.3

**ALARM SETTINGS**  
LOW DET/OVERFEED  
MACHINE CLEAN  
PROBE FAULT Y  
CHANGE SQZ TUBE  
CHANGE TANK  
LOW RINSE TEMP

2.2.1.3.1

**ENABLE ALARM**  
DISABLE  
ENABLE

2.2.1.3.1.1

**LOW DET ALARM**  
RACKS RUN LOW: 0  
ALARM SETTING: 0

2.2.1.3.1.1.1

**LOW DET ALARM**  
0

2.2.1.3.2

**ENABLE ALARM**  
DISABLE  
ENABLE

2.2.1.3.2.1

**MACH CLEAN RK**  
100

2.2.1.3.3

**COND PROBE MIN**  
000

2.2.1.3.3.1

**COND PROBE MAX**  
000

2.2.1.3.3.2

**PROBE FAULT RACK**  
000 RACKS

2.2.1.3.4

**CHG TUBE TIME**  
180 DAYS

2.2.1.3.5

**CHG TANK RACK**  
00 RACKS

2.2.1.3.6

**LOW RINSE TEMP**  
150 DEG F

# Program Menu/ Installer Service

2.2.1.4

**INSTALLER SERVICE**

- SERVICE PUMPS
- VIEW AMOUNT PUMPED
- CLEAR DATA LOG

2.2.1.4.1

**SERVICE PUMPS**

- VIEW PUMP CONFIG
- NAME PUMPS
- PUMP CALIBRATION
- PRIME PUMP
- ENTER PRODUCT COSTS
- TUBE REPLACEMENT

2.2.1.4.1.1

**VIEW PUMP CONFIG**

TYPE	PROD	INST
P1 SOL	DET	YES
P2 PUMP	RIN	YES
P3 PUMP	SAN	NO

2.2.1.4.1.2

**SELECT PUMP**

P1 DETERGENT

P2 RINSE

<DETERGENT>

<BACK ENTER>

2.2.1.4.1.3

**PUMP CALIBRATION**

VIEW CALIBRATION CALIBRATE

P1 DETERGENT 0.300

P2 RINSE 0.125

P3 SANITIZER 0.200

2.2.1.4.1.4

**SET PRIME PUMP**

P1 DETERGENT

P2 RINSE

P3 SANITIZER

PRIME

P1 DETERGENT

<EXIT START/STOP>

2.2.1.4.1.5

**PRODUCT COSTS**

P1 DETERGENT

P2 RINSE

P3 SANITIZER

P3 COSTS/GAL

<0000.00>

<BACK ENTER>

2.2.1.4.1.6

**TUBE REPLACEMENT**

P2 RINSE

P3 SANITIZER

P3 DATE CHANGED

<2013-01-05>

<OK EXIT>

2.2.1.4.1.7

**SELECT PUMP**

P1 DETERGENT

P2 RINSE

P3 SANITIZER

SOLENOID PUMP

<BACK ENTER>

2.2.1.4.1.8

**SELECT PUMP**

P1 DETERGENT

P2 RINSE

P3 SANITIZER

SET PUMP TYPE

DIET

RINSE

SAN

<BACK ENTER>

2.2.1.4.1.9

**SELECT PUMP**

P1 DETERGENT

P2 RINSE

P3 SANITIZER

PUMP INSTALL

NO

YES

<BACK ENTER>

2.2.1.4.2

**PUMPED (GAL.)**

P1 DETERGENT 18.5

P2 RINSE 26.2

P3 SANITIZER 38.0

2.2.1.4.3

**CLEAR DATA LOG**

WARNING! ALL LOGS WILL BE CLEARED

<BACK ENTER>

2.2.1.4.3.2

**CALIBRATE**

P1 DETERGENT

STOP PUMP AT 8.0Z.

0.000.00

WARNING! PLACE CONTAINER AT OUTPUT!

<EXIT START/STOP>

2.2.1.4.3.2.1

**CALIBRATE ML REV**

P1 DETERGENT

0.000.00

<BACK ENTER>

2.2.1.4.1.3.2

**PUMP CALIBRATION**

P1 DETERGENT

P2 RINSE

P3 SANITIZER

2.2.1.4.1.3.2.1

**CALIBRATE**

P1 DETERGENT

STOP PUMP AT 8.0Z.

0.000.00

WARNING! PLACE CONTAINER AT OUTPUT!

<EXIT START/STOP>

# Program Menu/ Systems Setup

2.2.1.5

**SYSTEM SETUP**

- EDIT INST PASSWORD
- EDIT MGR PASSWORD
- EDIT ACCOUNT NAME
- EDIT MACHINE NAME
- EDIT COMPANY NAME
- EDIT MACH NAME
- EDIT CONTACT NAME
- SET LCD CONTRAST
- SET DATE & TIME
- CLEAR SETTINGS
- VIEW SOFTWARE ID
- VIEW SERIAL NUM
- SIGNAL DSP ENABLE
- EXIT SOL ENABLE
- ELECTRIC COST/KWH
- FULL KW PWR USAGE
- IDLE KW PWR USAGE
- WATER VOL/WASH
- COND RANGE MAX

2.2.1.5.1

**INSTL PASSWORD**

<0123>

2.2.1.5.2

**MGR PASSWORD**

<0123>

2.2.1.5.3

**ACCOUNT NAME**

<RESTAURANT-087>

2.2.1.5.4

**MACHINE NAME**

<KITCHEN 01>

2.2.1.5.5

**COMPANY NAME**

<NOVA CONTROLS>

2.2.1.5.6

**EDIT MANF NAME**

< >

2.2.1.5.7

**EDIT CONTACT NAME**

< >

2.2.1.5.8

**LCD CONTRAST**

5 0

2.2.1.5.9

**DATE & TIME**

<0000-00-00> <00:00>

YYYY-MM-DD HH:MM

2.2.1.5.10

**CLEAR SETTINGS**

WARNING! ALL SETUPS  
WILL BE CLEARED TO  
FACTORY DEFAULTS!

2.2.1.5.10.1

**CLEAR SETTINGS**

ARE YOU SURE?

2.2.1.5.11

**SOFTWARE ID**

ANTARES DIM6000  
P/N: NIN-NNNN-NNN  
REV: NNNN

2.2.1.5.12

**SERIAL NUMBER**

12345678901234

2.2.1.5.13

**SIGNAL DSP ENABLE**

DISABLE

ENABLE

2.2.1.5.14

**EXT SOL ENABLE**

0

2.2.1.5.15

**ELECTRIC CST/KWH**

0000.00

2.2.1.5.16

**WATER CST/K UNITS**

0000.00

2.2.1.17

**FULL KW PWR**

000

2.2.1.18

**IDLE KW PWR**

000

2.2.1.19

**WATER VOL/WASH**

000



# Program Menu/ Data Transfer

2.2.1.6

**DATA TRANSFER**  
 WRITE REPORTS  
 READ SETUP  
 WRITE SETUP  
 UPDATE FIRMWARE

2.2.1.6.1

**REPORT DATE**  
 FROM: 2013-01-01  
 <BACK ENTER>

2.2.1.6.1.1

**REPORT DATE**  
 TO: 2013-05-28  
 <BACK ENTER>

2.2.1.6.1.2

**REPORT NAME**  
 <UVWXYZ>  
 INSERT USB DRIVE  
 <BACK ENTER>

2.2.1.6.1.2

**WARNING**  
 NAME EXISTS  
 OVERWRITE EXISTING  
 FILE NAME?  
 <BACK ENTER>

2.2.1.6.2

**SETUP FILE**  
 STD DOOR SETUP  
 STD CONVEYOR  
 BOBS BURGERS  
 PUB AND GRUB  
 JOES CAFE

2.2.1.6.2.1

**WARNING**  
 THIS WILL OVERWRITE  
 EXISTING SETTINGS  
 AND FORMULAS  
 <BACK ENTER>

2.2.1.6.2.2

**ERROR**  
 UNABLE TO  
 READ FILE  
 <BACK ENTER>

2.2.1.6.3

**SETUP FILE**  
 < V W X Y Z >  
 INSERT USB DRIVE  
 <BACK ENTER>

3.0

## 3.0 ALARM SECTION

3.1

**ALARM**  
 DETERGENT OVERFEED  
 STOP! - CHANGE THE  
 PRODUCT CONTAINER  
 BEFORE CLEARING  
 < CLEAR

3.7

**ALARM**  
 LOW RINSE  
 TEMPERATURE  
 < CLEAR

3.2

**ALARM**  
 MACHINE CLEAN! -  
 PERFORM A DE-LIME  
 CYCLE ON THE WASHER  
 < CLEAR

3.8

**ALARM**  
 PUMP 1 JAM  
 CHECK DISPENSER  
 < CLEAR

3.3

**ALARM**  
 COND PROBE FAULTY! -  
 CHECK DET PROBE FOR  
 DAMAGE OR FOULING  
 < CLEAR

3.9

**ALARM**  
 CONDUCTIVITY PROBE  
 NOT CALIBRATED  
 < CLEAR

3.4

**ALARM**  
 COND PROBE FAULTY! -  
 DO YOU WISH TO SWITCH  
 TO PROBELESS MODE  
 < YES NO >

3.5

**ALARM**  
 SQUEEZE TUBES NEED  
 TO BE CHANGED!  
 < CLEAR

3.6

**ALARM**  
 CHANGE TANK!  
 RACKS RUN SINCE LAST  
 INITIAL FILL HAS BEEN  
 EXCEEDED  
 < CLEAR